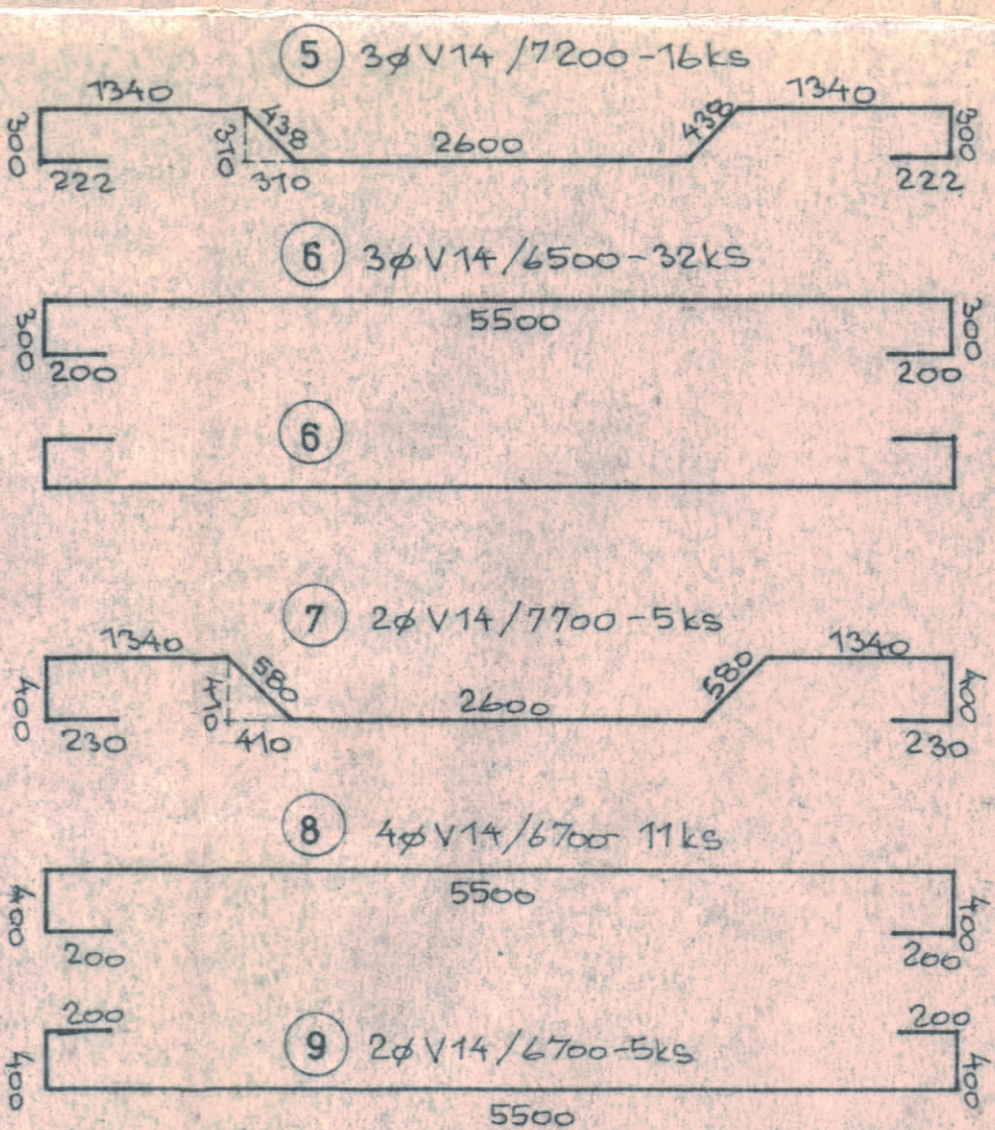
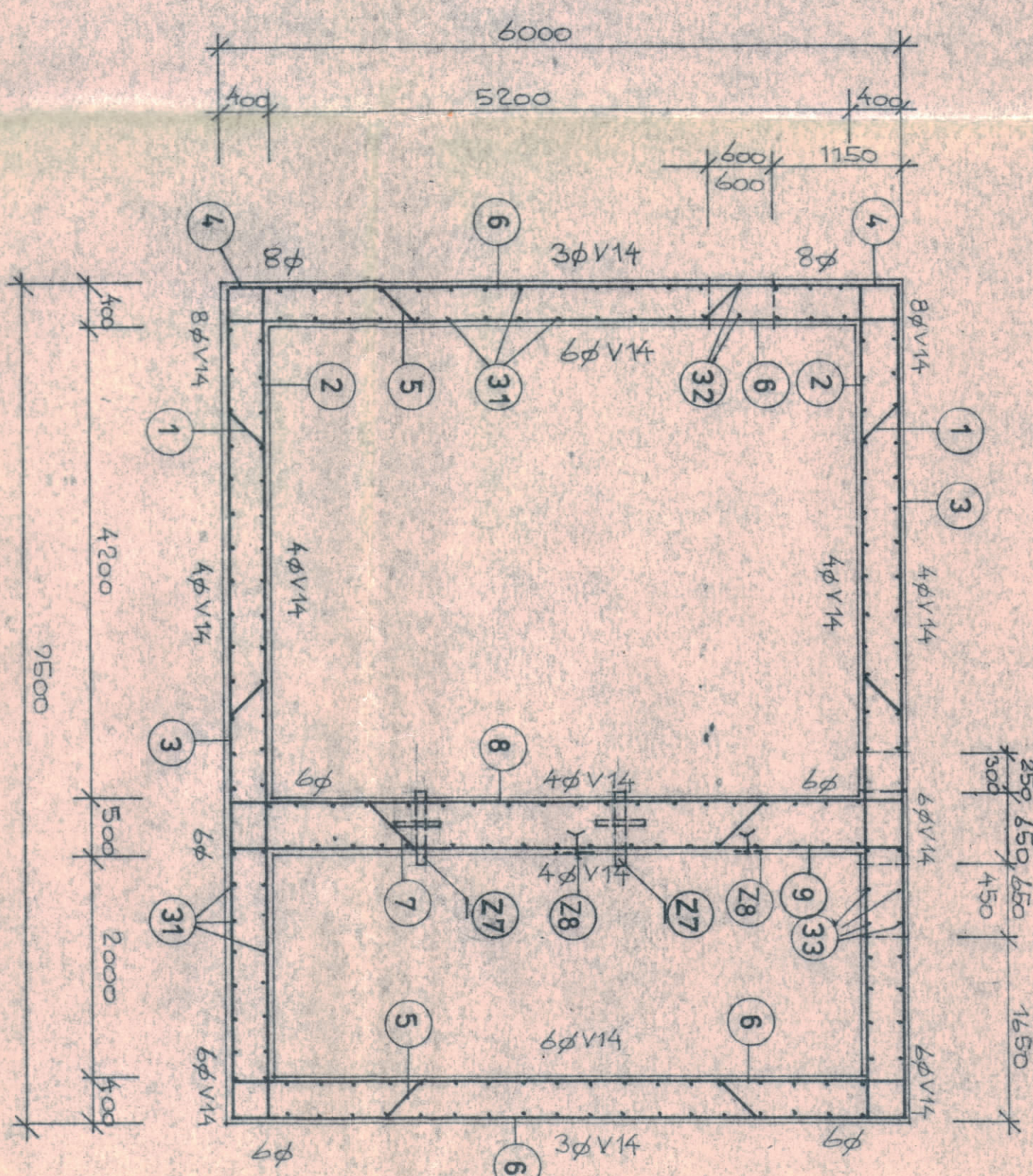
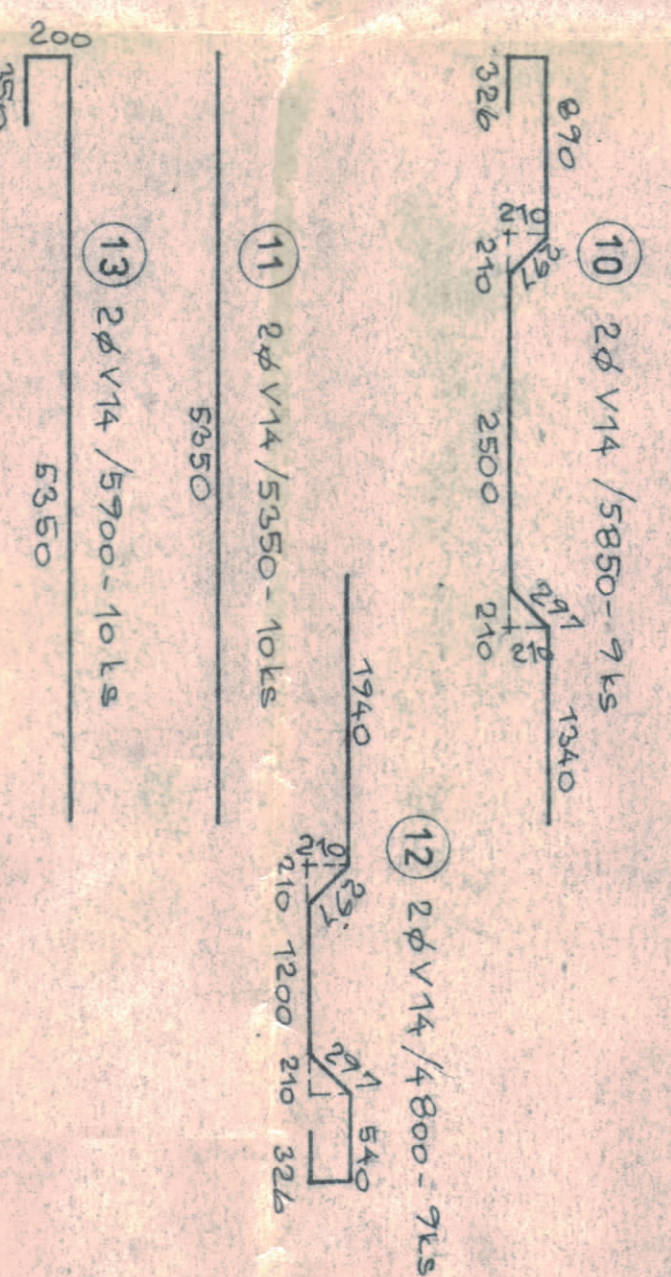
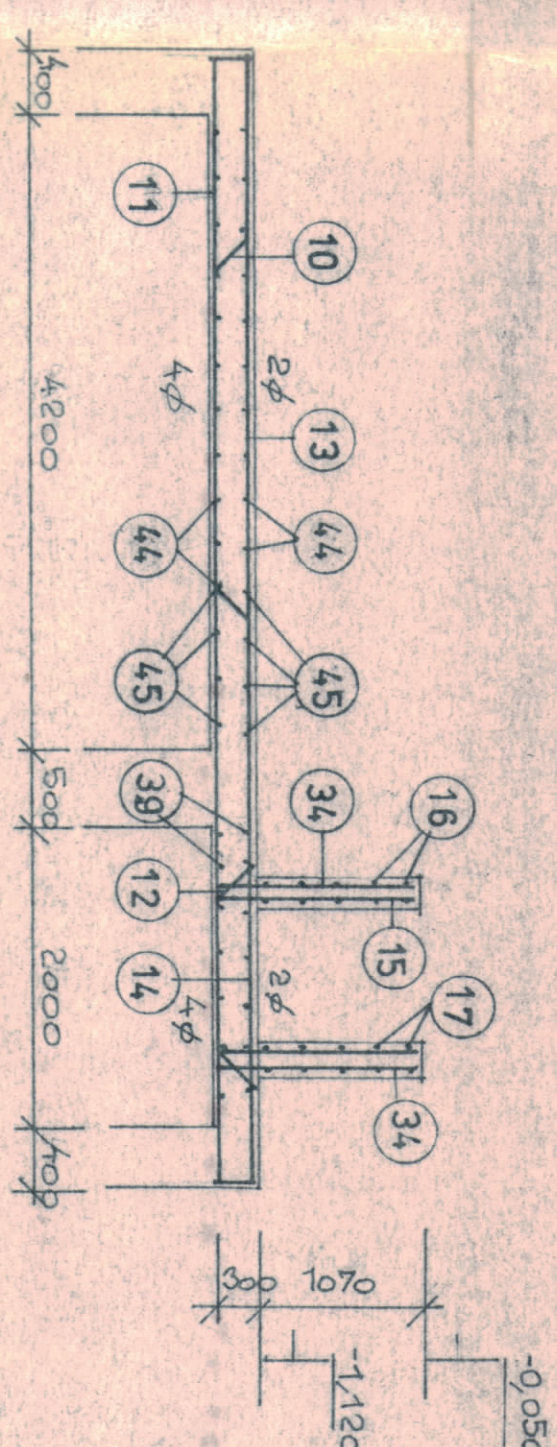


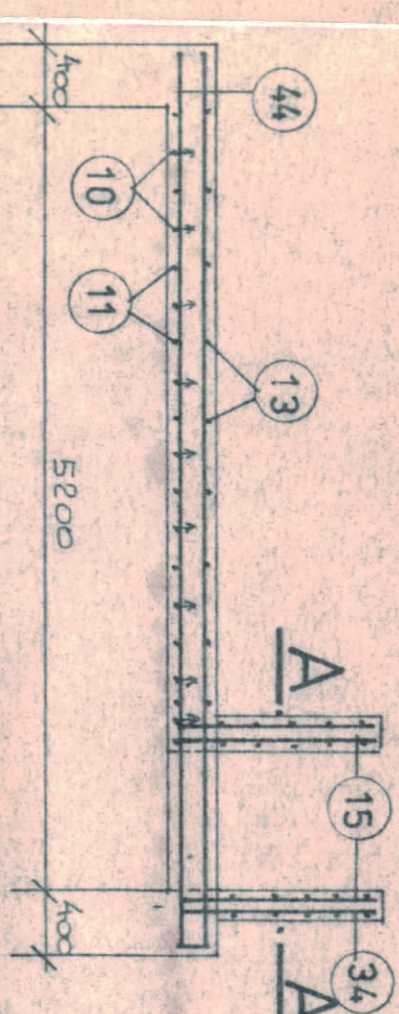
1:50



ŘEZ 1-1



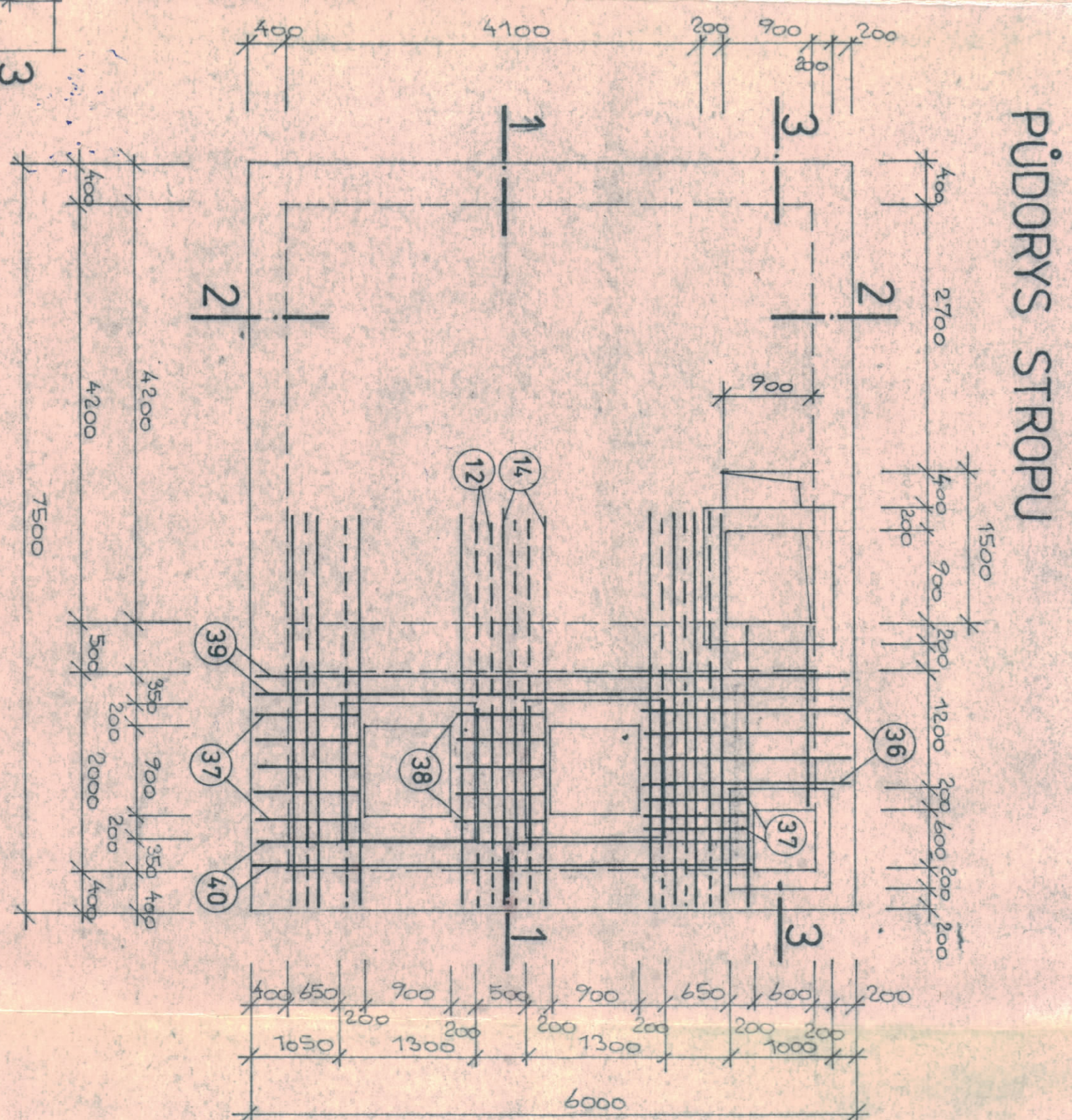
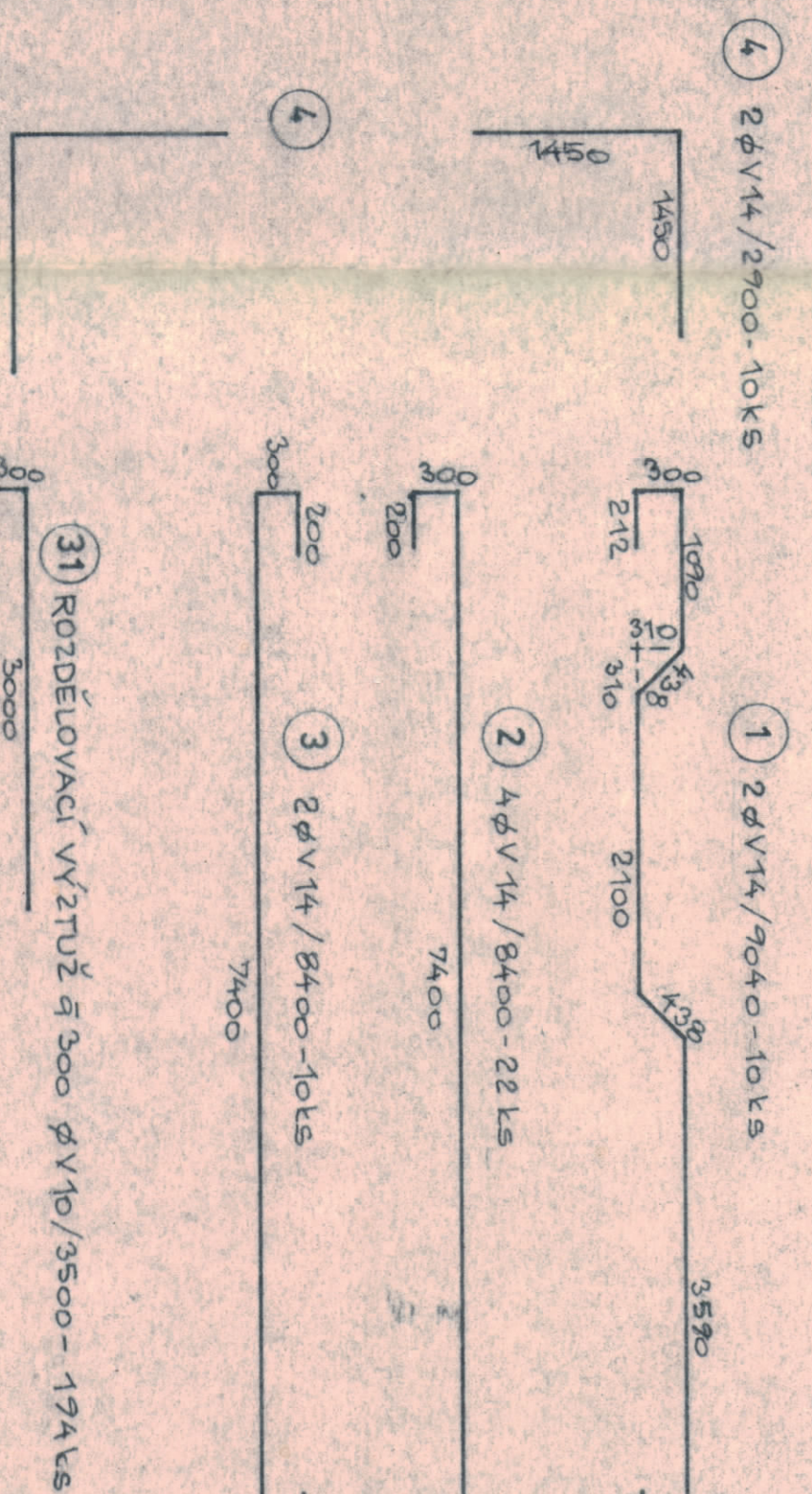
ŘEZ 2-2



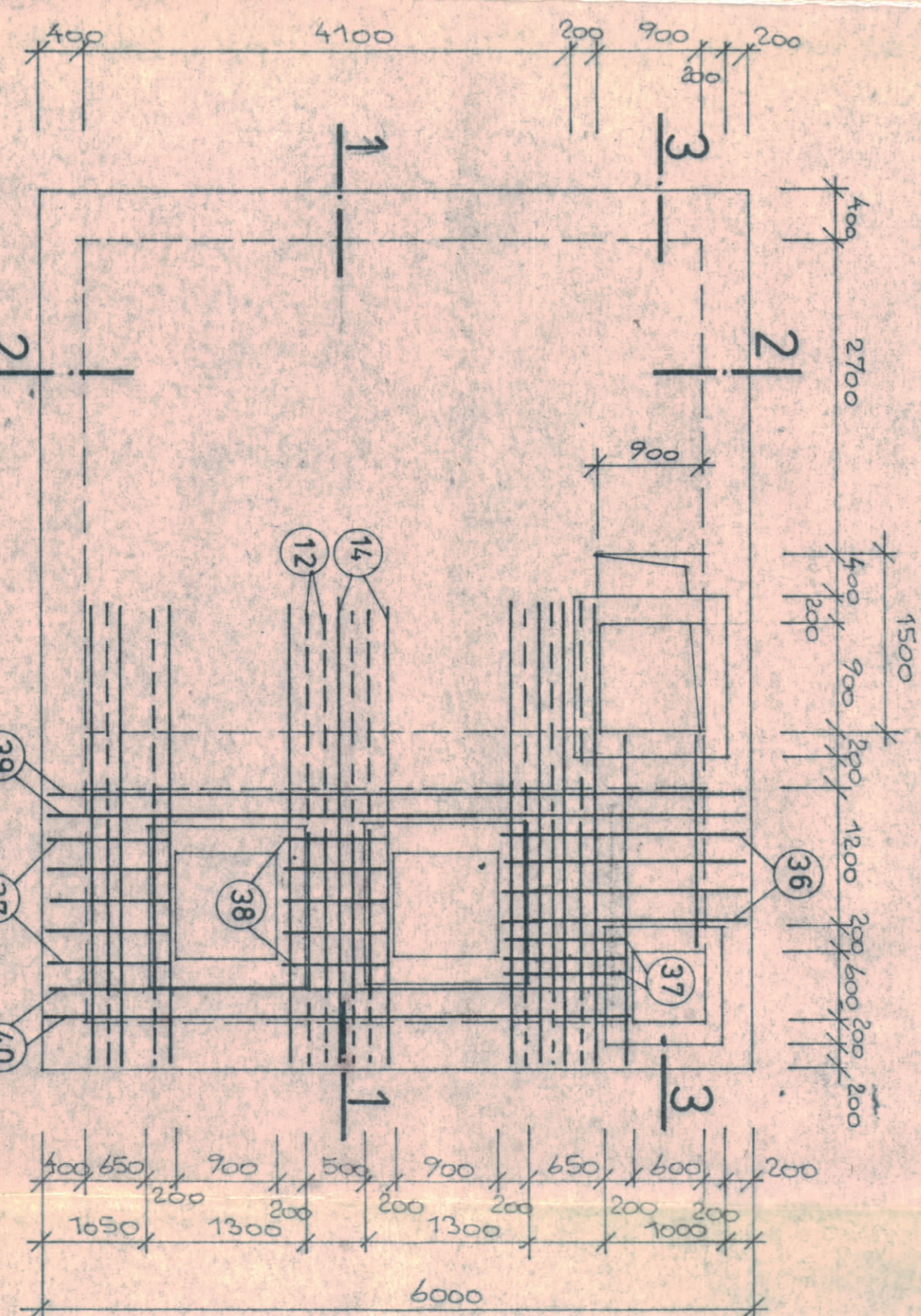
VÝPIS VÝZTUŽE

POL.	ρ	DEFECT N	KS	CELL KEM	
				ρ V10	ρ V14
1	V 14	9,04	46		90,40
2	-1-	8,40	02		184,80
3	-1-	8,40	40		84,00
4	-1-	8,40	40		59,40
5	-1-	7,20	16		145,20
6	-1-	6,80	32		106,00
7	-1-	7,70	5		38,50
8	-1-	6,70	41		75,70
9	-1-	6,70	5		33,50
10	-1-	5,85	40		51,70
11	-1-	5,35	40		83,80
12	-1-	4,80	40		43,00
13	-1-	5,70	40		57,00
14	-1-	4,40	40		86,00
15	V 10	4,55	44	89,40	
16	-1-	4,70	50	870,00	
17	-1-	4,72	15	64,05	
18	-1-	4,87	16	38,55	
19	-1-	3,57	5	16,85	
20	-1-	2,27	5	14,35	
21	-1-	2,55	10	23,50	
22	V 14	4,42	9	371,76	
23	-1-	4,70	9	44,40	
24	-1-	8,84	10	88,40	
25	-1-	9,06	19	182,44	
26	-1-	5,76	2	17,88	
27	-1-	6,35	2	48,70	
28	-1-	5,63	3	77,49	
29	-1-	3,35	3	40,05	
30	-1-	4,30	3	67,90	
31	V 10	3,50	494	679,00	
32	-1-	1,65	4	5,60	

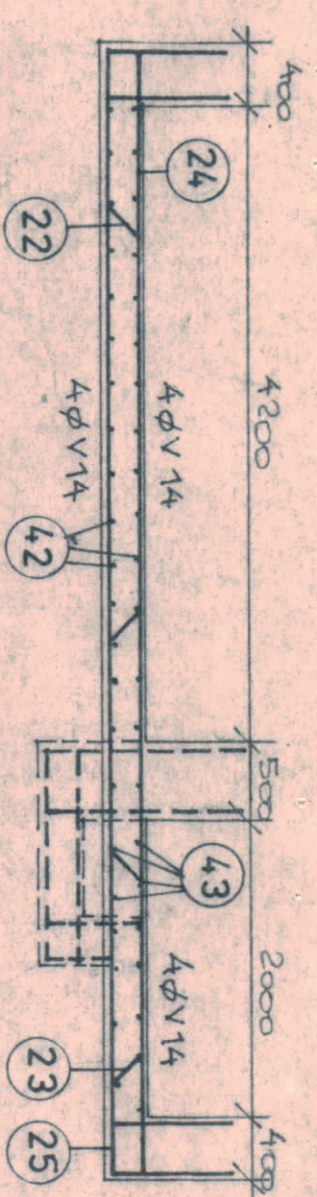
PUDORYS DNA



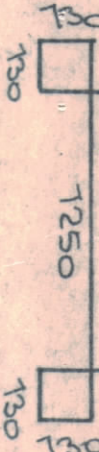
PUDORYS STROPU



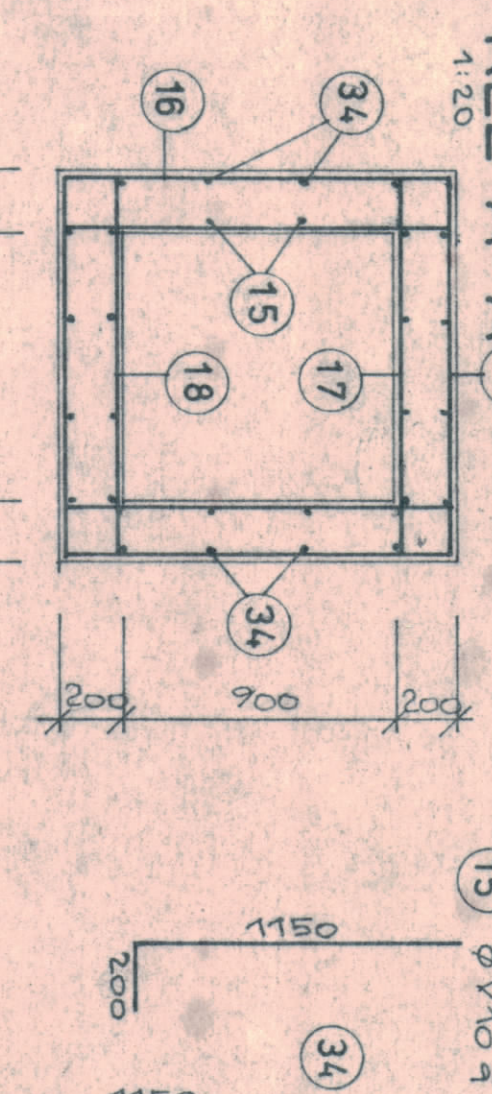
ŘEZ 4-4



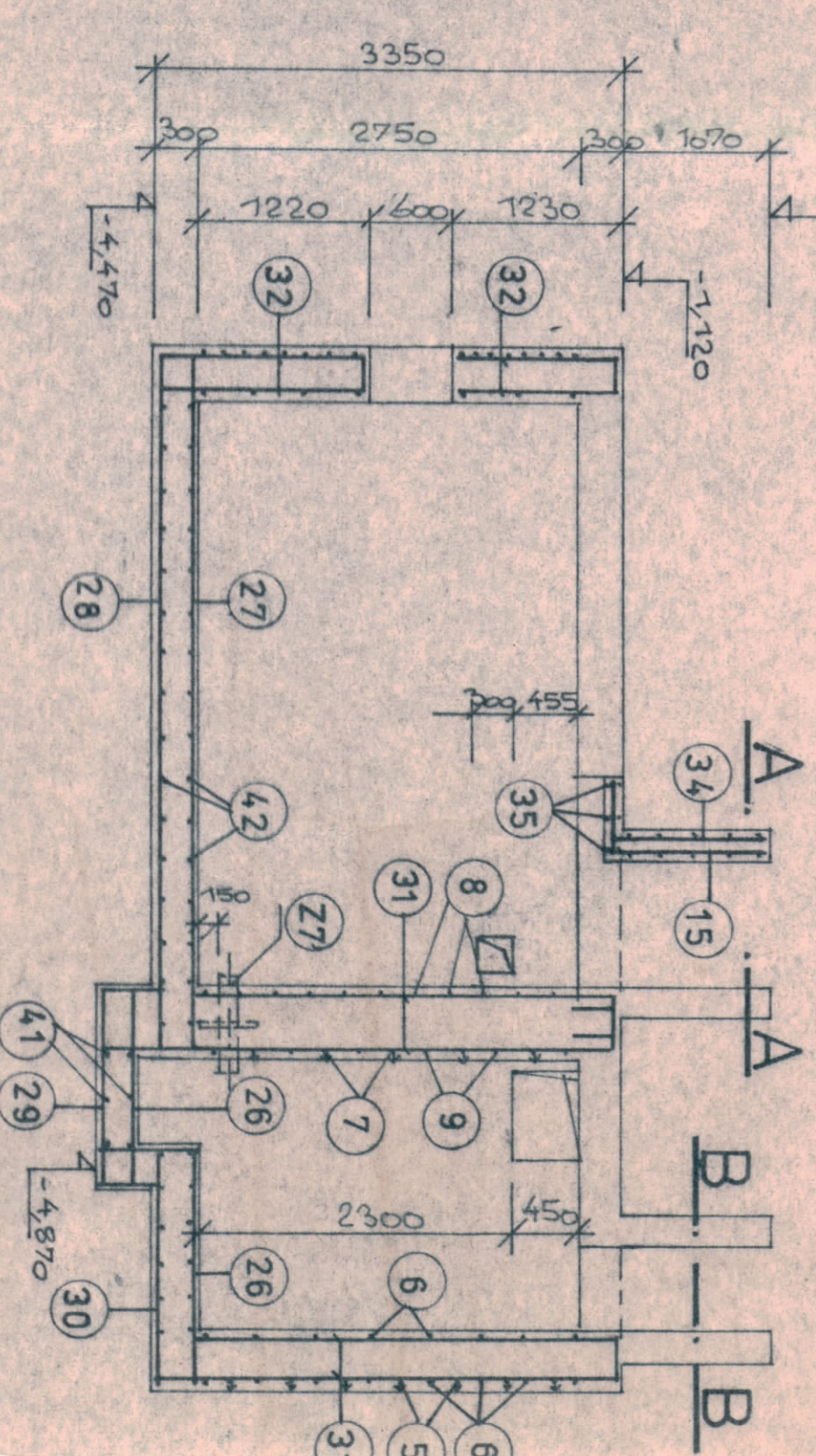
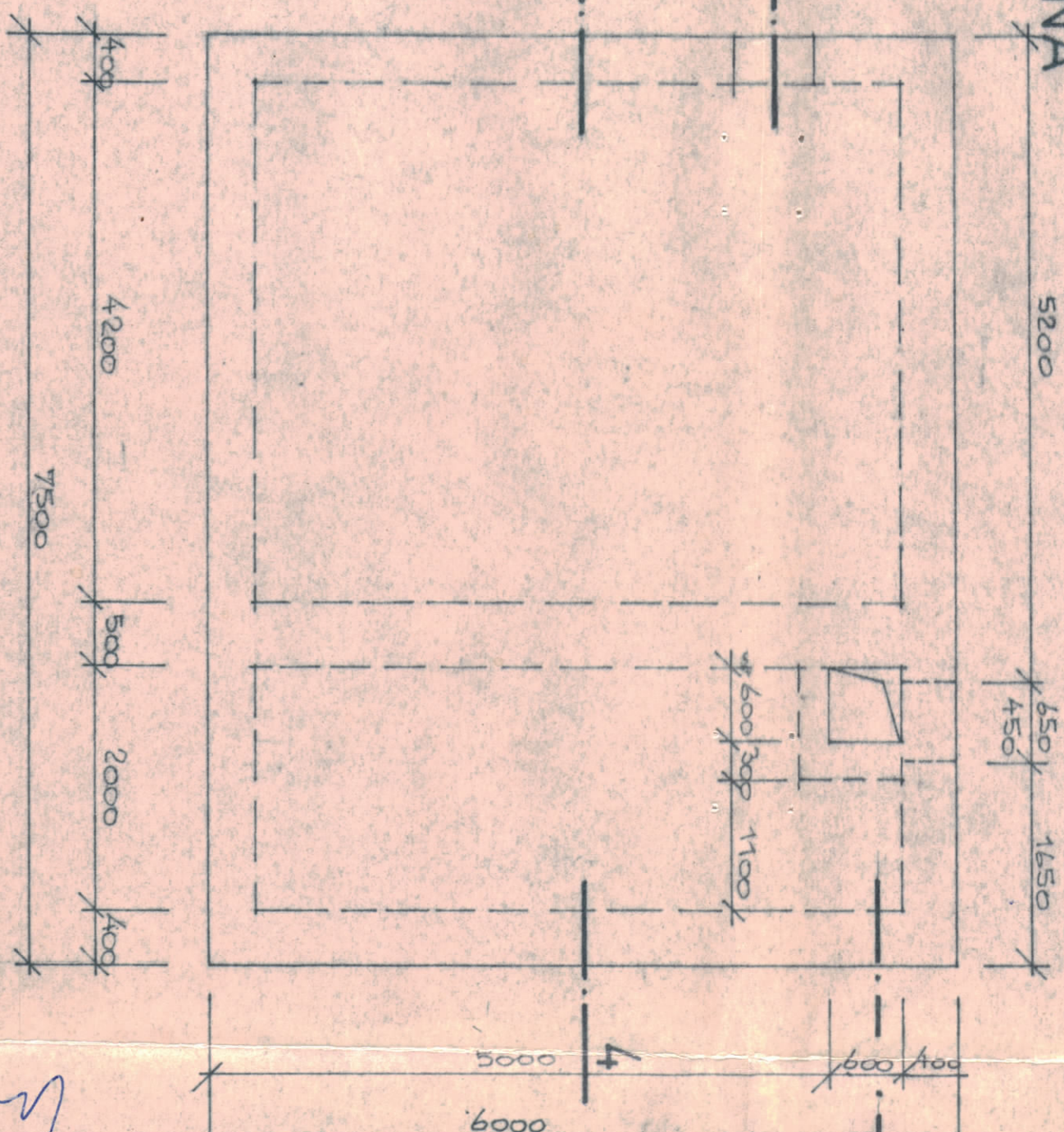
REZ B-B



REZ A-A¹⁶



REN 3-3



BETON TR. III (B250)

OCEL 10425 (V)

KRYTÍ VÝZTUŽE 35 MM

34	— "	4,15	60	69,00	
35	V 14	6,60	5		7,80
36	V 10	4,95	8	10,60	
37	— "	6,75	16	16,70	
38	— "	9,80	40	9,00	
39	— "	5,70	4	23,60	
40	— "	5,00	4	20,00	
41	— "	4,10	6	6,00	
42	V 14	7,60	42		59,20
43	V 14	4,90	4		49,60
44	V 14	6,30	22		136,60
45	V 14	4,80	8		36,60
DLEK				495,30	2,80
1)					
HYNOST 14V V EG				6,617	1,208
DLE D				1494,0	2,540
HYNOST CELEH					
3) 50,10 KG					

[illegible]